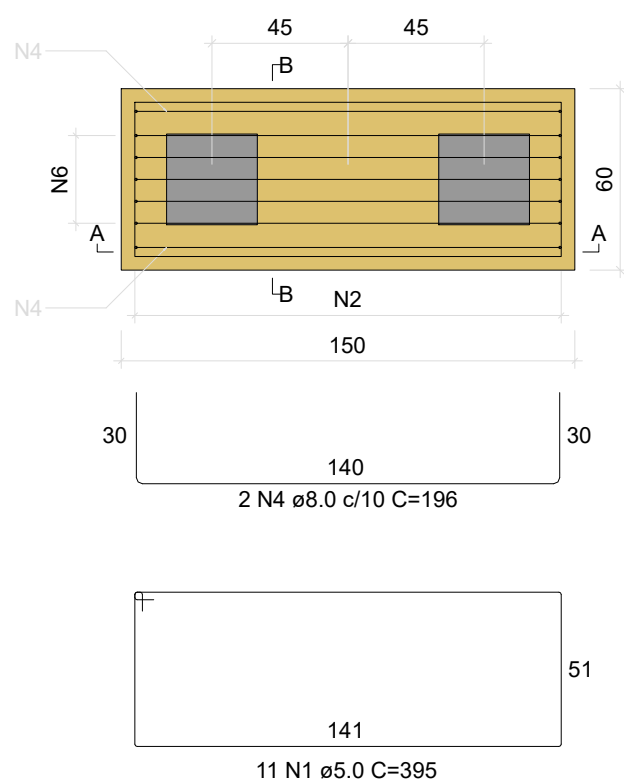
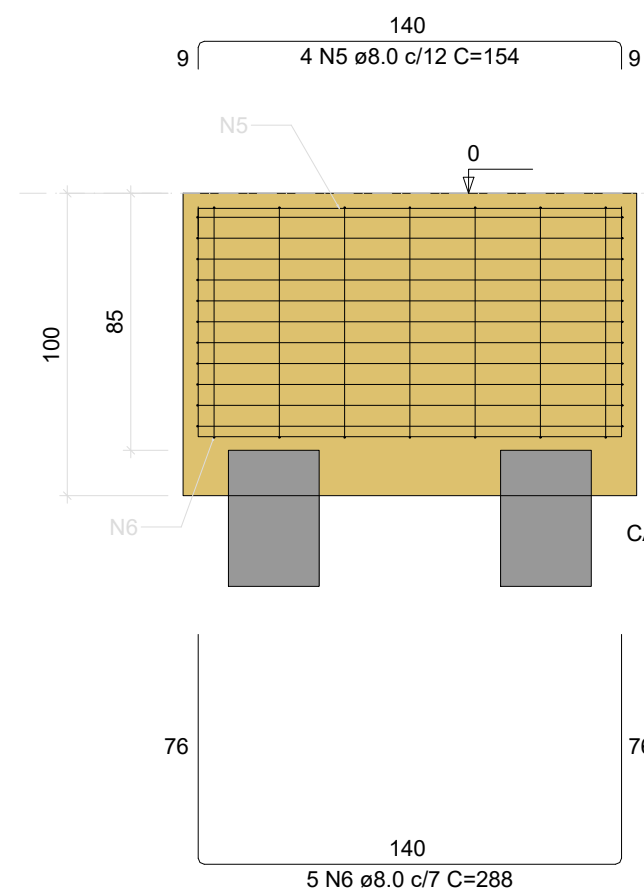


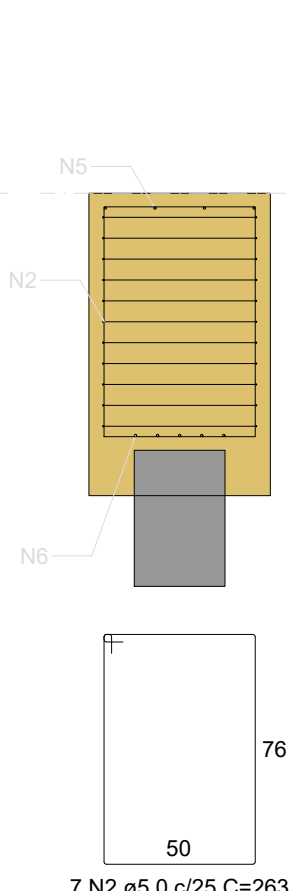
BI-P56  
2xR30  
PLANTA  
ESC 1:25



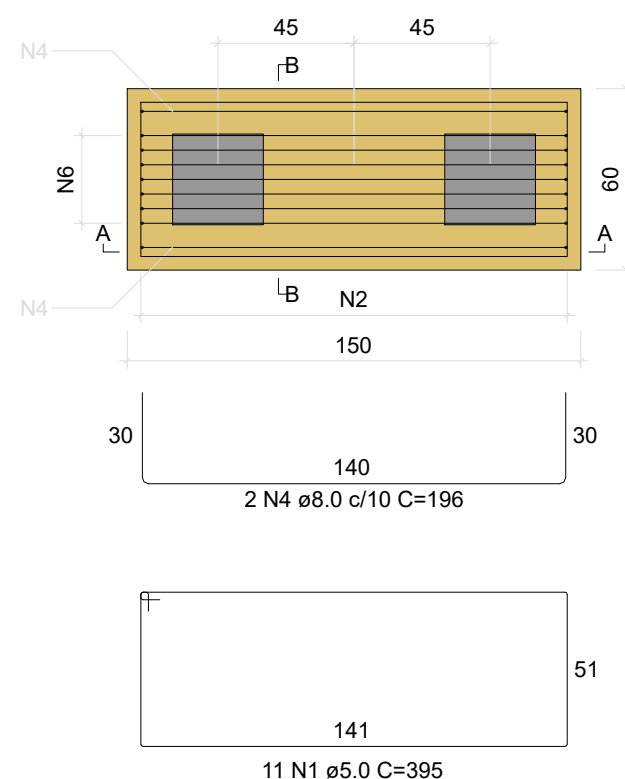
CORTE A-A  
ESC 1:25



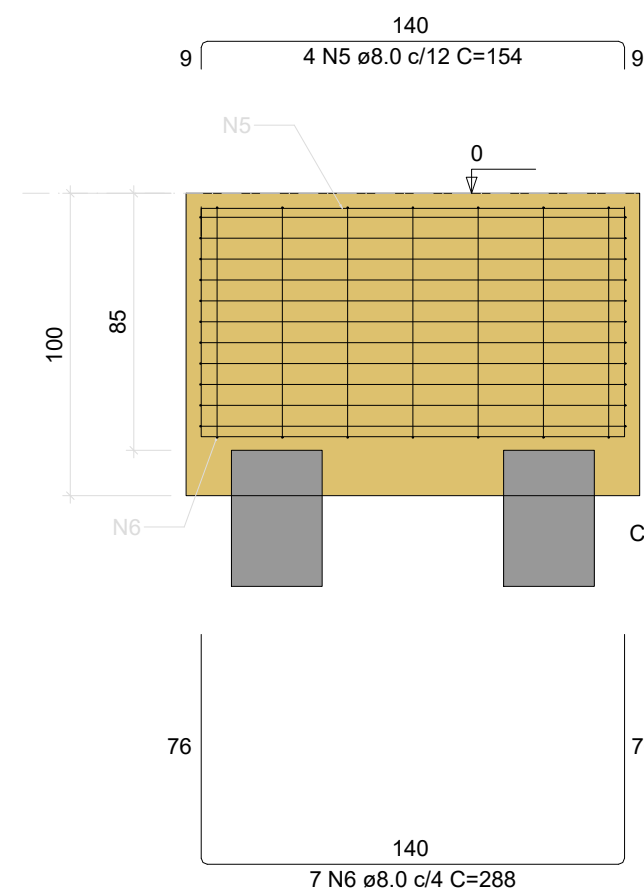
CORTE B-B  
ESC 1:25



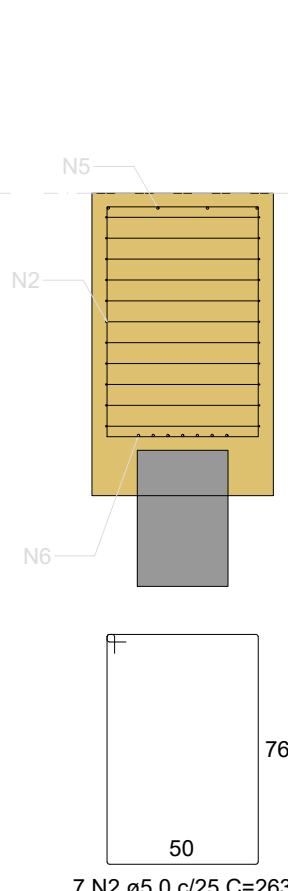
BI-P57  
2xR30  
PLANTA  
ESC 1:25



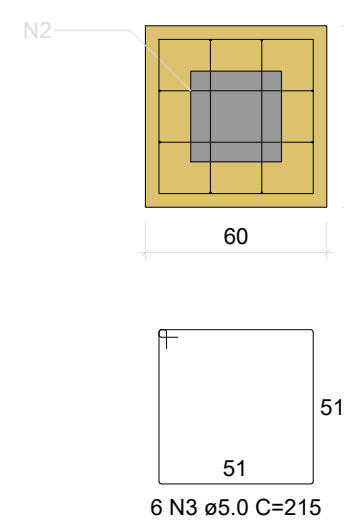
CORTE A-A  
ESC 1:25



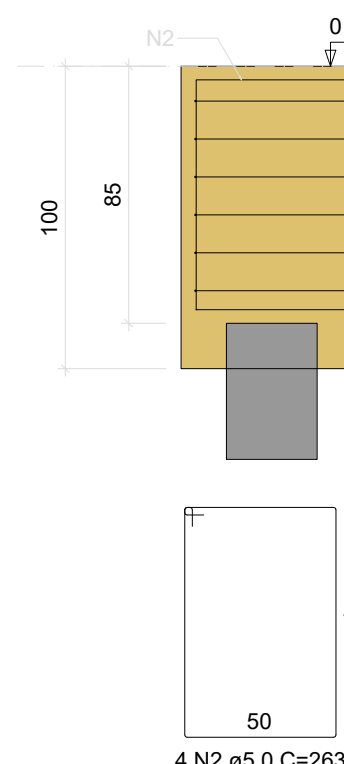
CORTE B-B  
ESC 1:25



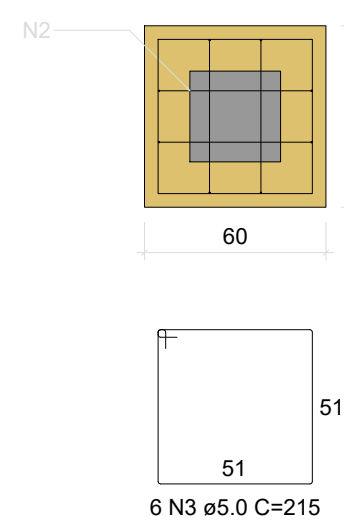
BI-P58  
1xR30  
PLANTA  
ESC 1:25



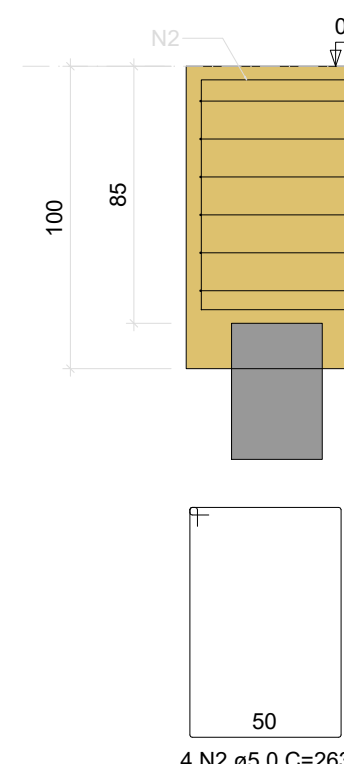
CORTE  
ESC 1:25



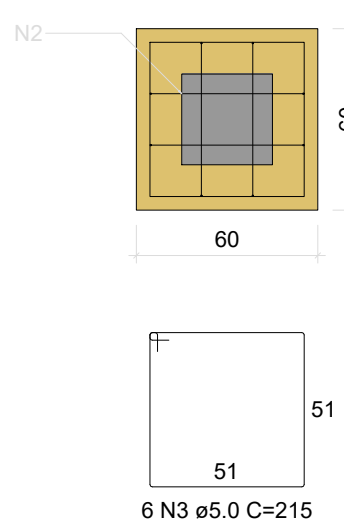
BI-P59  
1xR30  
PLANTA  
ESC 1:25



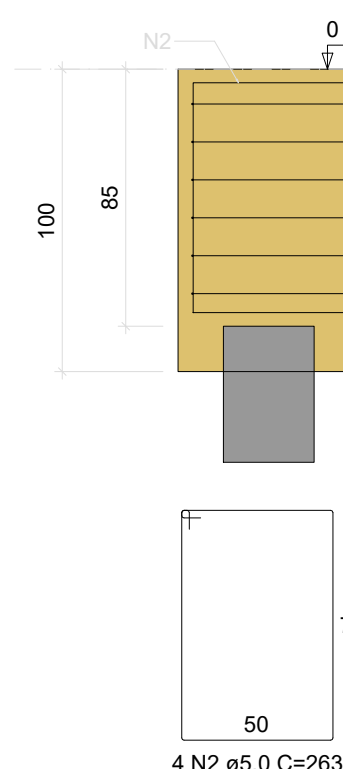
CORTE  
ESC 1:25



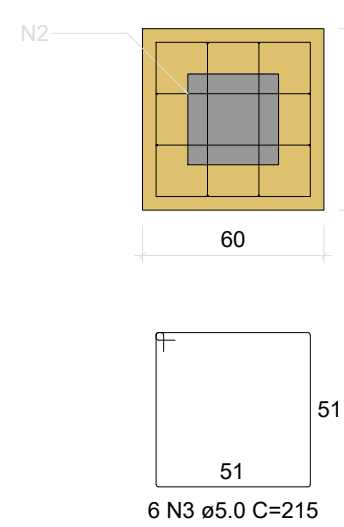
BI-P60  
1xR30  
PLANTA  
ESC 1:25



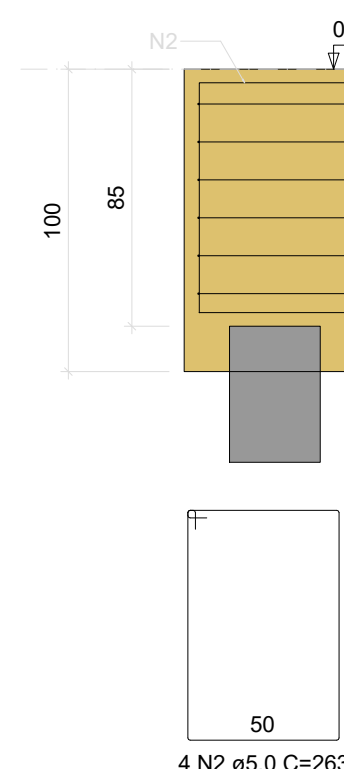
CORTE  
ESC 1:25



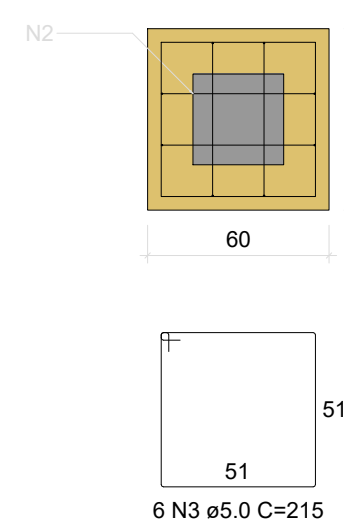
BI-P61  
1xR30  
PLANTA  
ESC 1:25



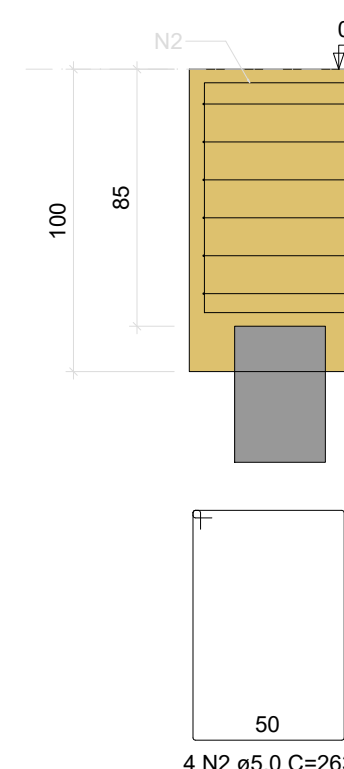
CORTE  
ESC 1:25



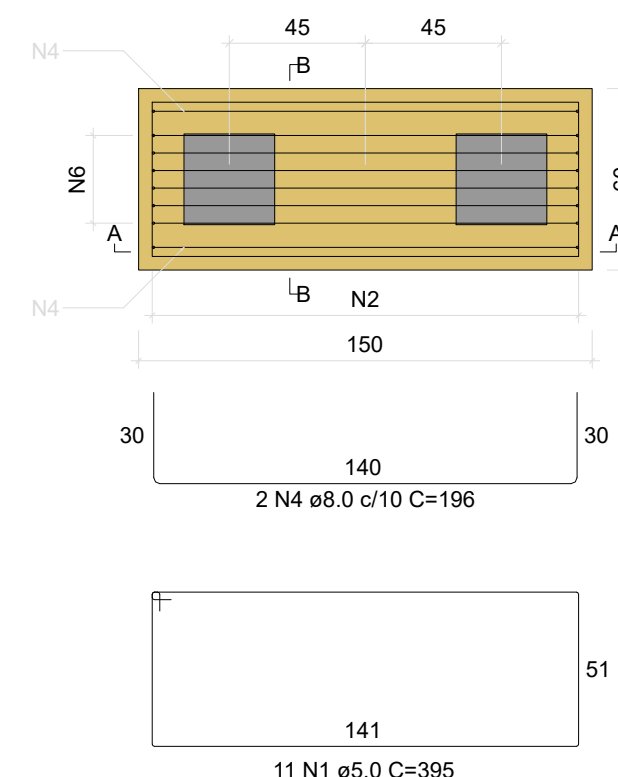
BI-P62  
1xR30  
PLANTA  
ESC 1:25



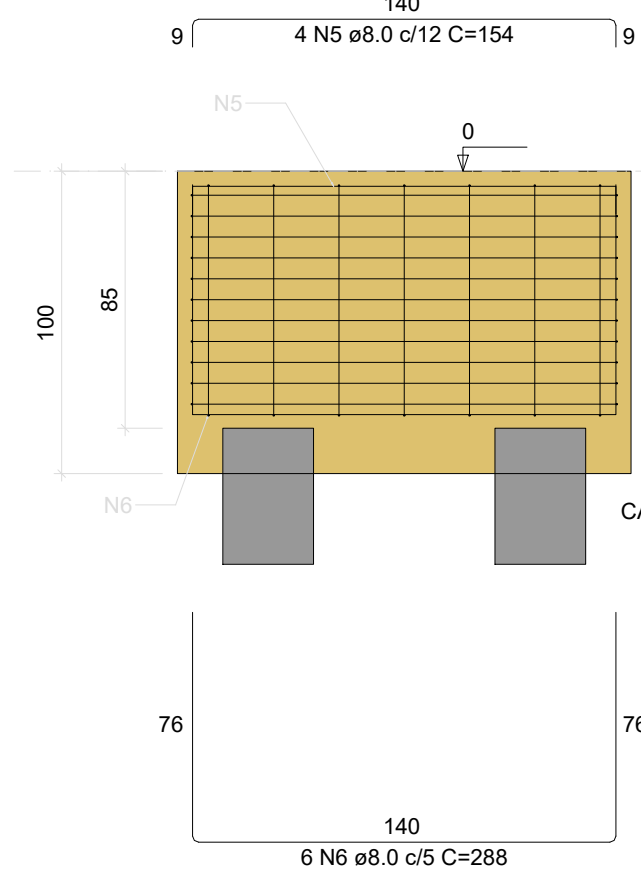
CORTE  
ESC 1:25



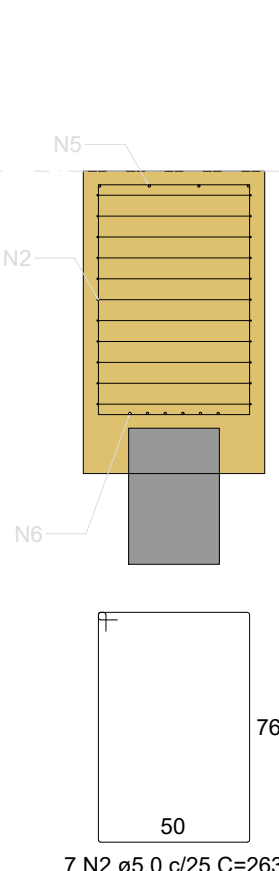
BI-P63  
2xR30  
PLANTA  
ESC 1:25



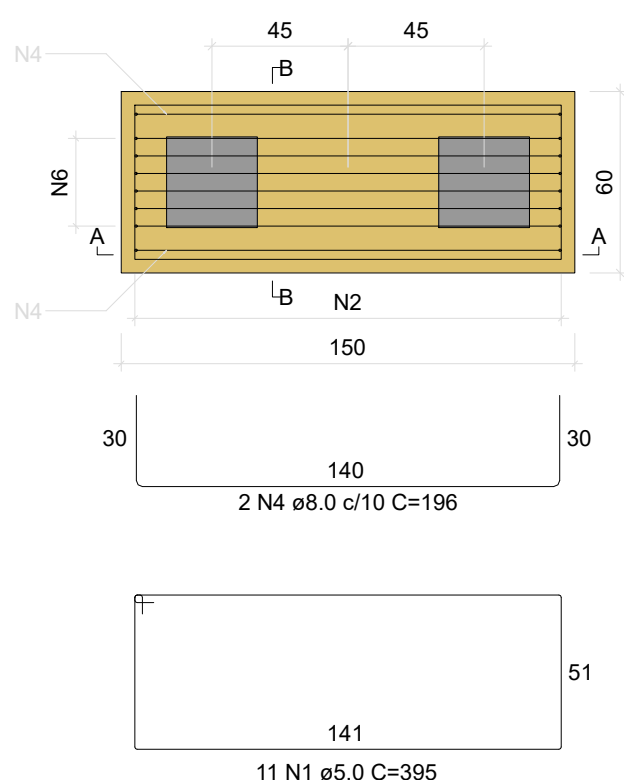
CORTE A-A  
ESC 1:25



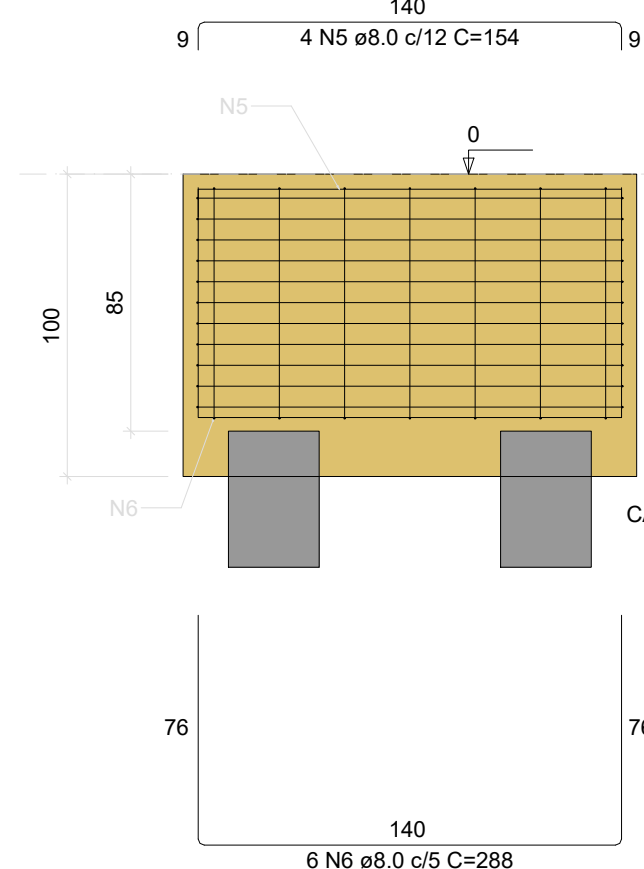
CORTE B-B  
ESC 1:25



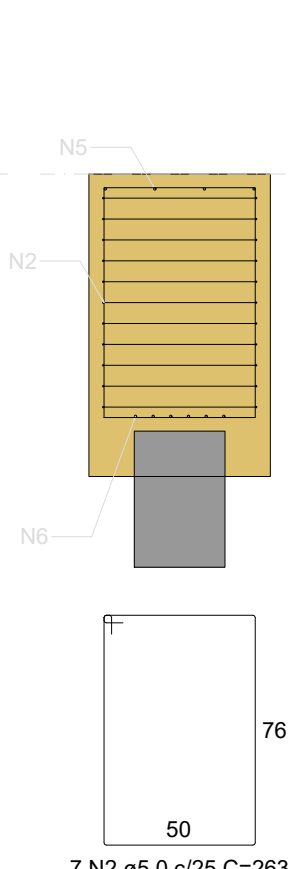
BI-P64  
2xR30  
PLANTA  
ESC 1:25



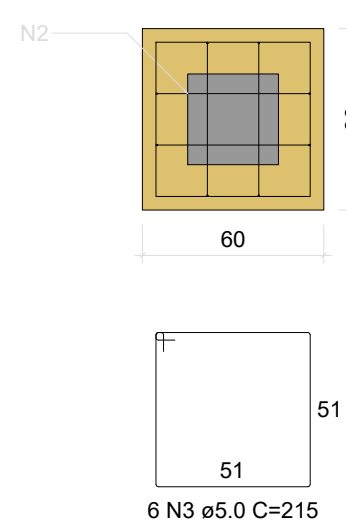
CORTE A-A  
ESC 1:25



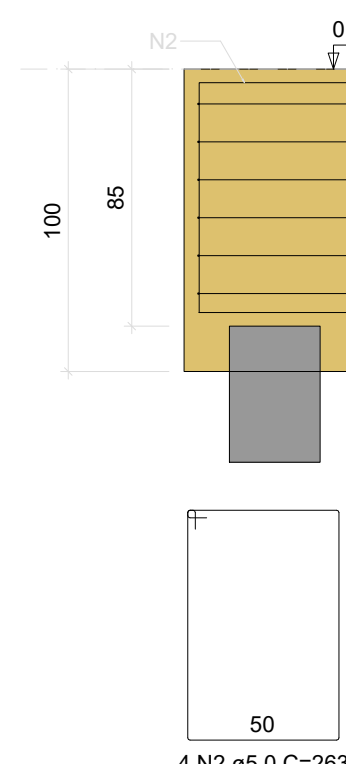
CORTE B-B  
ESC 1:25



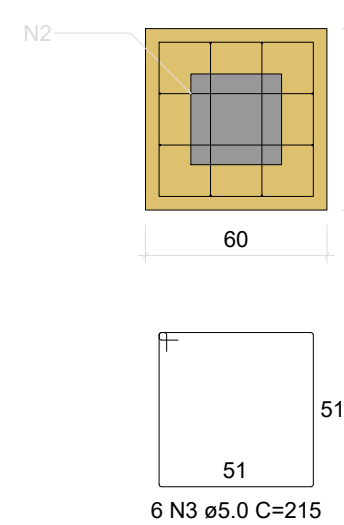
BI-P65  
1xR30  
PLANTA  
ESC 1:25



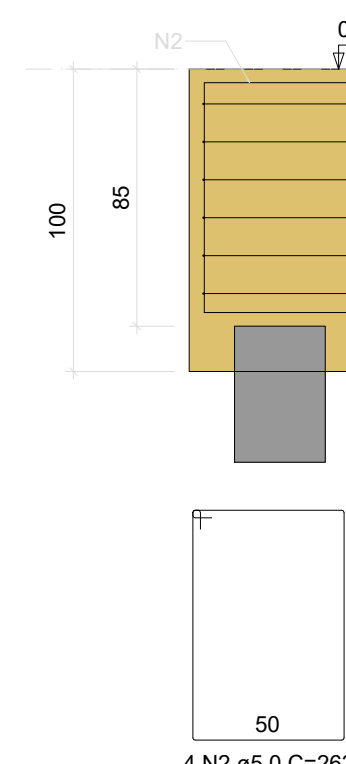
CORTE  
ESC 1:25



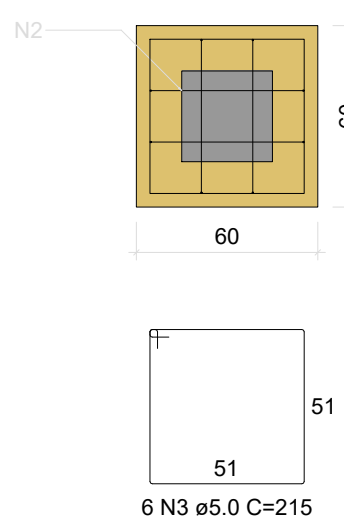
BI-P66  
1xR30  
PLANTA  
ESC 1:25



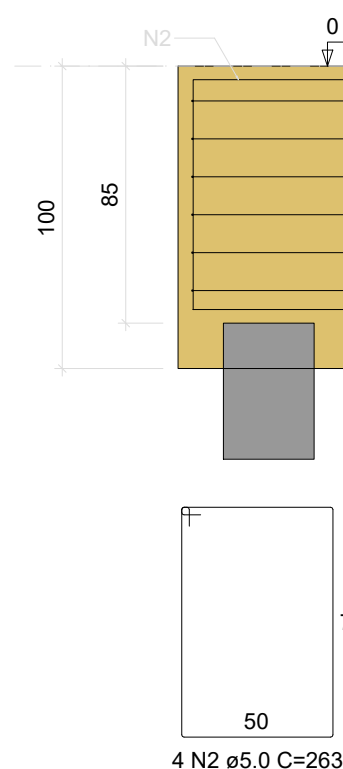
CORTE  
ESC 1:25



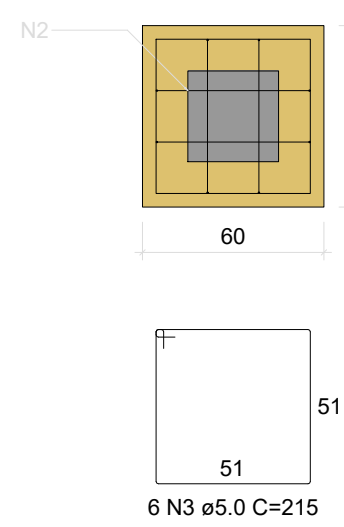
BI-P68  
1xR30  
PLANTA  
ESC 1:25



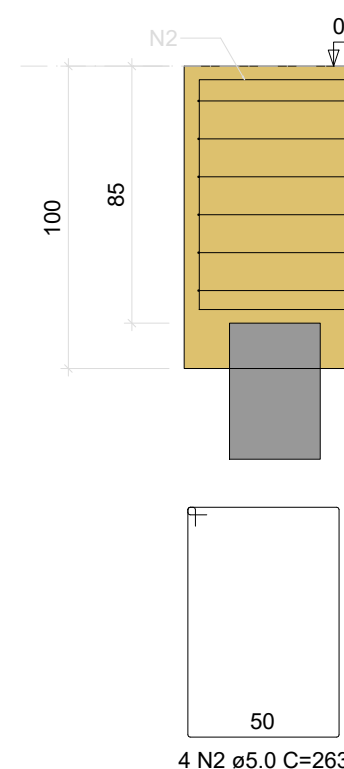
CORTE  
ESC 1:25



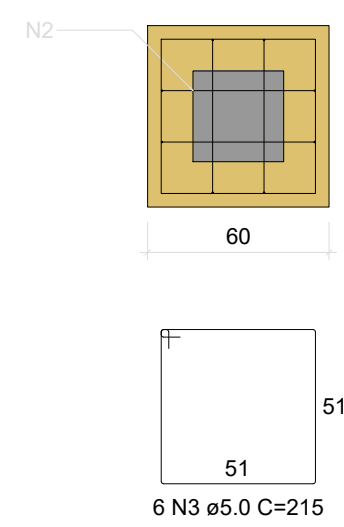
BI-P69  
1xR30  
PLANTA  
ESC 1:25



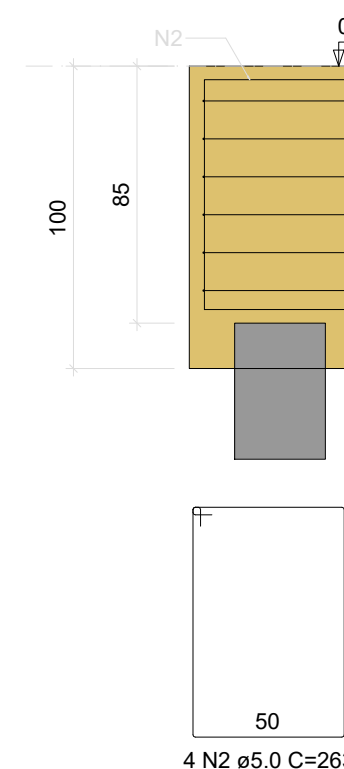
CORTE  
ESC 1:25



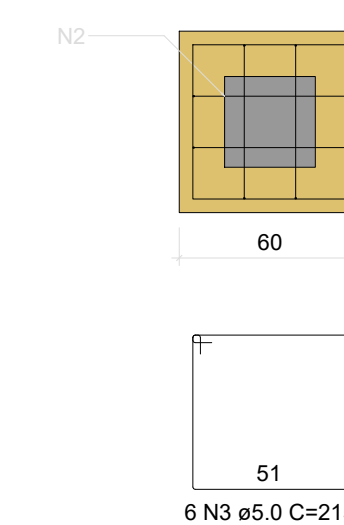
BI-P70  
1xR30  
PLANTA  
ESC 1:25



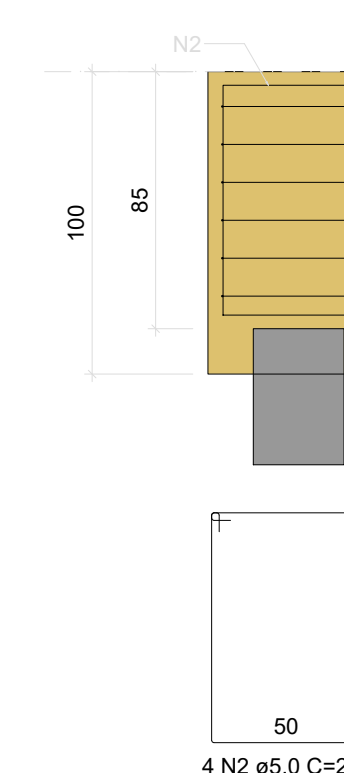
CORTE  
ESC 1:25



BI-P67  
1xR30  
PLANTA  
ESC 1:25



CORTE  
ESC 1:25



RELAÇÃO DO AÇO

BI-P56	BI-P57	BI-P58
BI-P59	BI-P60	BI-P61
BI-P62	BI-P63	BI-P64
BI-P65	BI-P66	BI-P67
BI-P68	BI-P69	BI-P70

AÇO	N	DIAM (mm)	QUANT	C.UNIT (cm)	C.TOTAL (cm)
CA60	1	5.0	44	395	17380
	2	5.0	72	263	18936
	3	5.0	66	215	14190
CA50	4	8.0	8	196	1568
	5	8.0	16	154	2464
	6	8.0	24	268	6432

RESUMO DO AÇO

AÇO	DIAM (mm)	C.TOTAL (m)	PESO + 10% (kg)
CA50	8.0	109.4	47.5
CA60	5.0	505.1	85.6
PESO TOTAL (kg)			
CA50		47.5	
CA60		85.6	

Volume de concreto (C-25) = 7.30 m³  
Área de forma = 43.20 m²

Setor I - SI

Setor II - SII

TODAS AS MEDIDAS E NÍVEIS DEVERÃO SER CONFERIDOS NO LOCAL.

R003			
R002			
R001			
REVISÃO	ALTERAÇÕES	EMIÇÃO	RESPONSÁVEL

UNIDADE DE SAÚDE QUINTA DO PORTAL

<div></div> <div>PREFEITURA MUNICIPAL DE PORTO ALEGRE</div> <div>SECRETARIA MUNICIPAL DE OBRAS E INFRAESTRUTURA</div> <div>DIRETORIA DE PROJETOS E OBRAS VIÁRIAS</div>			
RESPONSÁVEIS TÉCNICOS PROJETO DE ARQUITETURA: <b>JULIANO FABRO</b> ARQUITETO E URBANISTA CAU.A22875-3   ID. FUNC.: 1609270	PROJETO DE ARQUITETURA: <b>LUIZ PRESTES</b> ARQUITETO E URBANISTA CAU.A23531-8   ID. FUNC.: 270122	PROJETO EXECUTIVO ESTRUTURAL: <b>AMANDA DA CUNHA FIGUEIRA</b> ENGENHEIRA CIVIL CREA.RS193.391   ID. FUNC.: 1606638	COORDENADOR <b>CÉSAR FABRÍCIO BREDA</b>  DESENHO <b>AMANDA</b>
OBRA <b>US QUINTA DO PORTAL</b>			ÁREA <b>672,53 m²</b>
ENDEREÇO <b>ESTRADA AFONSO LOURENÇO MARIANTE, Nº 5547 - LOMBA DO PINHEIRO</b>			MUNICÍPIO <b>PORTO ALEGRE/RS</b>
PROJETO <b>EXECUTIVO ESTRUTURAL</b>		ASSUNTO <b>SETOR SI BLOCOS DE FUNDAÇÃO - 04</b>	Nº PRANCHA <b>PE05</b>
ESCALA <b>INDICADA</b>	DATA <b>ABRIL/2024</b>		
NOME ARQUIVO <b>USQP-2024-EST-PEE.dwg</b>			